

44 Post Office Road, Featherstone, Pontefract, WF7 5ER

Located on Post Office Road, Featherstone, this charming terraced home offers a great mix of character and space.

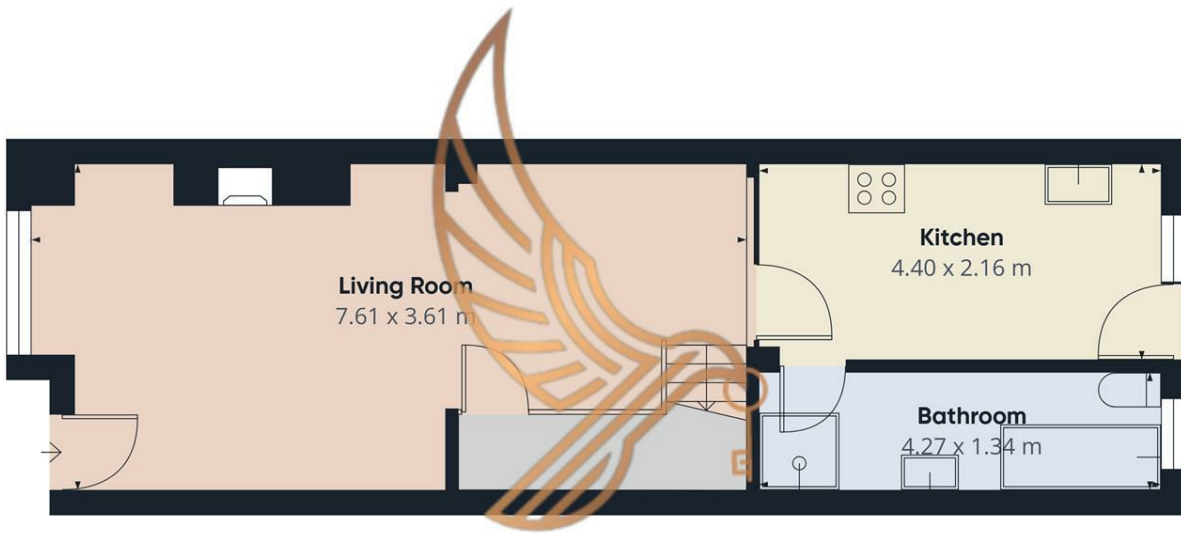
The property features three well-proportioned bedrooms, a comfortable reception room, and a practical layout ideal for family living. Extending to approx. 1,022 sq ft, there is plenty of space throughout.

Well positioned close to local amenities, schools and transport links, this home is perfect for families, first-time buyers or commuters looking for convenience.

A fantastic opportunity to secure a spacious home in a popular location.

- 3 Bedroom Terraced Property
- Spacious Kitchen/Diner
- Yard To The Rear
- Perfect For First Time Buyers Or Investors
- Close To Local Shops, Schools and Other Amenities
- Close To Local Transport Links

£130,000



Approximate total area⁽¹⁾
41.4 m²

KESTREL
ESTATES



Floor 0

(1) Excluding balconies and terraces

Calculations reference the RICS IPMS 3C standard. Measurements are approximate and not to scale. This floor plan is intended for illustration only.

GIRAFFE360

Energy Efficiency Rating		Current	Potential
Very energy efficient - lower running costs			
(92 plus) A			
(81-91) B			
(69-80) C			
(55-68) D			
(39-54) E			
(21-38) F			
(1-20) G			
Not energy efficient - higher running costs			
England & Wales	EU Directive 2002/91/EC	69	80